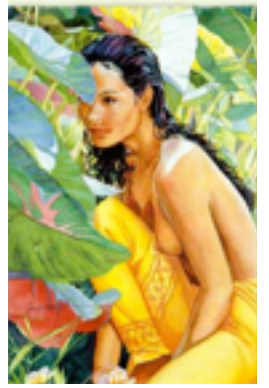


Ku'u Hoa

Francis Keali'inohopono Beamer



C A7 D7
He aloha ku`u ipo

G7
Ku`u hoa maka onaona
C

Noho i ke kuahiwi

Love for my sweetheart
My gentle-eyed companion
Who resides in the mountains

C A7 D7
E ho`i mai nō kā ua

G7
Me a`u e pili e ku`u `i`ini
C

A ka pu`u wai

Let us return, we two
My desire (for you) is
Always in my heart

C A7 D7
O ka pā kōnane

G7
A ka mahina la
C

Ahuwale no ka pae `opua

Brightly shining
Is the moon
Revealing the cloudbanks

C A7 D7
Ha`ina mai ka puana

G7
Ku`u hoa maka onaona
C

Noho i ke kuahiwi

Tell the refrain of
My gentle-eyed companion
Who resides in the mountains

Source: Marion Leong - Written in 1937 for the composer's wife, Louise Leiomalama Walker Beamer. She was the Hawaiian culture consultant for the movie "Waikiki Wedding" starring Bing Crosby. Injuring her foot, she was unable to work at the studio for a week, inspiring Pono to set his desire to music - to return with his sweetheart to their home in the kuahiwi of Alewa Heights.