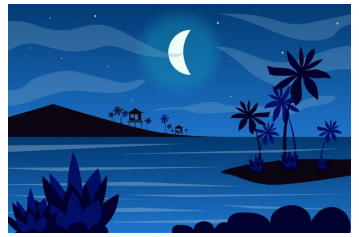


Blue Hawaiian Moonlight

Written by: Al Dexter, James Paris



Blue Hawaiian [G] moon-[D]light
Shining over the [E7] sea
Guide me to the [A7] islands
Where I'm longing to [D] be [A7]

Blue Hawaiian [G] moon-[D]light
Find the one I a-[E7]dore
Spread your magic [A7] love light
Guide my ship to the [D] shore [D7]

[BRIDGE]

When the night is [G] falling
I'm in deep rever-[D]ie
I can hear you [E7] calling
Oh, please come back to [A7] me.

You know how I'm [G] yearn-[D]ing
Make my dreams all come [E7] true
Blue Hawaiian moon- [A7] light
I'm depending on [D] you. [D7]

[INSTRUMENTAL]

[BRIDGE]

When the night is [G] falling
I'm in deep rever-[D]ie
I can hear you [E7] calling
Oh, please come back to [A7] me.

You know how I'm [G] yearn-[D]ing
Make my dreams all come [E7] true
Blue Hawaiian moon- [A7] light
I'm depending on [D] you.

Blue Hawaiian [G] moon-[D]light
Shining over the [E7] sea
Guide me to the [A7] islands
Where I'm longing to [D] be.

[TAG - REPEAT LAST LINE IN BOLD]

1. Trish sings through first bridge.

2. Gregg plays first two verses - does not play bridge.

3. Trish picks up again at bridge and finishes the song.

4. Tag song as noted.